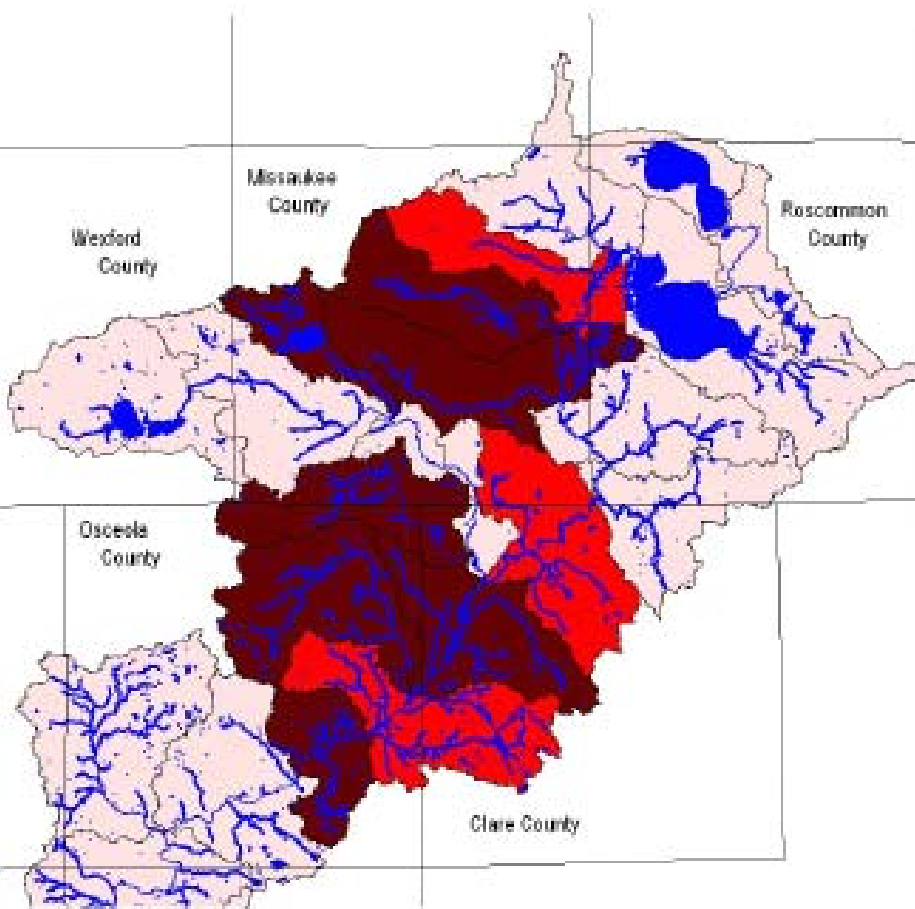


Critical Areas Sensitivity Ranking for In-Stream Temperature Fluctuation Upper Muskegon River Watershed



Sensitive Subwatersheds – In-Stream Temperature Fluctuations –
 Generally:
 Muskegon River and tributaries upstream of City of Ewart
 Except Clam River and the main branch Muskegon River and tributaries from Townline Creek (Roscommon County line) to Butterfield Creek

Major effected tributaries include:
 Middle Branch River
 West Branch Clam River
 Mosquito Creek (tributary to Clam River)
 Butterfield Creek
 West Branch Muskegon River

Legend

-  Streams/Lakes
- Sensitivity Rank from Temp Fluctuations**
-  Low (Rank=1-2)
-  Moderate (Rank=3)
-  High (Rank=4)

